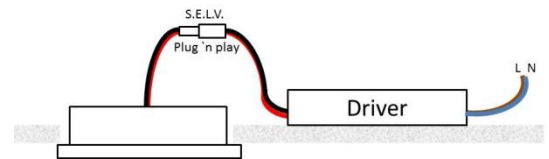
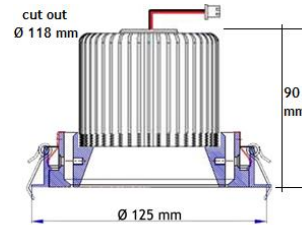
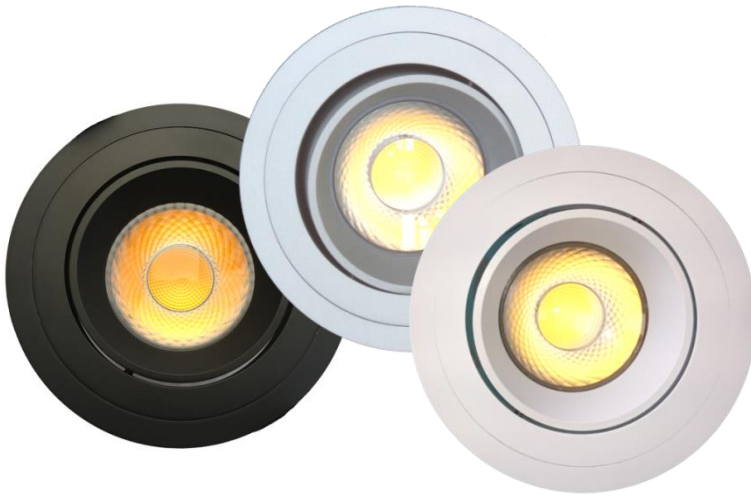


## Alumé-XL Round Recessed Tilt 18W COB LED

Code: **802613160** (white ambient)  
**802613163** (white accent)  
**802693160** (silver ambient)  
**802693163** (silver accent)  
**802623160** (black ambient)  
**802623163** (black accent)



### Features

Adjustable recessed Downlight with LED lamp, complete with SELV driver to suit, pre wires and ready to install:

- Simple ceiling fixings
- Energy saving
- Low operating temperature
- Long lifetime LED
- Full intensity from switch on
- Driver with S.E.L.V. output
- Safe Class III luminaire
- IBL 5 Year warranty on fittings and drivers - 3 Years on IBL-LED Module

### Technical data

Dimensions: Height	90 mm
Diameter:	125 mm Ø
Ceiling cut-out:	Ø 118 mm (max. 30mm thick)
Installation Depth:	100 mm
Weight:	ca. 0,65 kg incl. driver
Material:	Die cast aluminium
Max. surface temp:	85 °C
Colours:	Black, Silver, White
Beam:	Ambient light 40D (smooth) Accent light 38D (sharp)
Anticipated install time:	10 min

### Certification



### Electrical Data

#### LED DRIVER:

Output type	constant current
Input voltage	220-240 Vac, 50-60 Hz 90-305 Vac, 50-60 Hz*
Input current	max. 0,12 A max. 0,32 A*
cos phi	>0,95 >0,9*

Electrical safety	Class II
Output isolation	S.E.L.V.

#### LUMINAIRE:

Electrical safety	Class III
-------------------	-----------

#### LEDs:

Power:	18W(nom.)@500 mA
--------	------------------

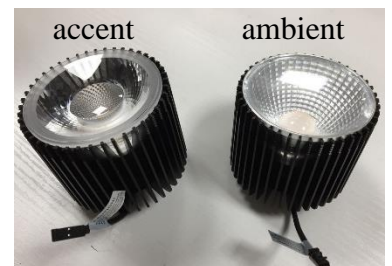
Secondary connection: Top Connector prewired plug and socket to lighting unit ready to install

**WARNING**  
Do NOT switch using TRIAC-based (transistor, thyristor) circuits.  
Damage to driver inevitable

### LED specification

LED lighting unit with CREE XLamp® CXA 2520

Color Temperature CCT:	nom. 3000 K
Light Output:	approx. 1360 lm
Beam:	Various Beam Angles
CRI:	≥ 80
Lifetime L70/B30:	30 000 h



### ECO-Dashboard



### Contact details

IBL lighting GmbH  
Christinenstr. 11  
D-40880 Ratingen  
Tel: +49-2102- 94 20 66 0  
Fax: +49-2102- 94 20 66 6  
web: www.ibl.eu  
email: info@ibl.eu