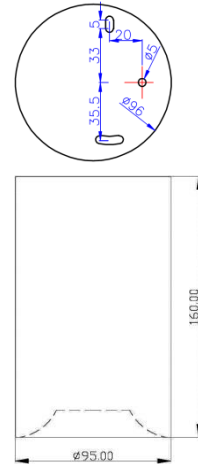


Surface mounted Spotlight IP54 - 1 x 7W Gen4 LED

Code: **801813122 (white)**
801823122 (black)



Features

Surface mounting Downlight with LED lamp, complete with SELV driver ready to install:

- Energy saving
- Low operating temperature
- Long lifetime LED
- Full intensity from switch on
- Driver with S.E.L.V. output
- Safety Class I luminaire
- Protection Class IP54
- IBL 5 Year warranty on fittings and drivers - 3 Years on IBL-LED Module

Technical data

Dimensions: Height 160 mm
Width: Ø 95 mm

Weight: ca. 0,75 kg incl. driver

Material: Diacast aluminium

Max. surface: 85°C

Colours: White
Black

Electrical Data

LED DRIVER:

Type constant current
Input voltage 100-240Vac 50/60Hz
Input current max. 0,12A
cos phi >0,9

Electrical safety Class II

Output isolation S.E.L.V.
Output Current: 700 mA dc
Output Voltage : max. 20 V dc

LUMINAIRE:

Electrical safety Class I
Protection Class IP54

LEDs:

Power: 7W_(nom.)@700 mA
Warm White 2875-3200K

WARNING
Do NOT switch using TRIAC-based (transistor, thyristor) circuits.
Damage to driver inevitable

LED specification

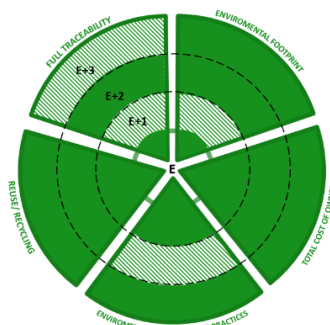
IBL Gen⁴ LED lighting unit with CREE XLamp® MHD-E LEDs

Color Temperature CCT: 3000 K
Light Output: approx. 650 lm per LED

CRI: ≥80
L70 Lifetime: 30 000 h



ECO-Dashboard



Contact details

IBL lighting GmbH
Christinenstr. 11
D-40880 Ratingen
Tel: +49-2102- 94 20 66 0
Fax: +49-2102- 94 20 66 6
web: www.ibl.eu
email: info@ibl.eu